

The first Nowell

Basse



mf

The first Now - ell the an - gel did say Was to cer - tain poor
They look - ed up and saw a star, Shin - ning in the
This star drew night to the north - west, O'er Beth - le -
Then en - er'd in those wise - men three, fell re - 'rent -

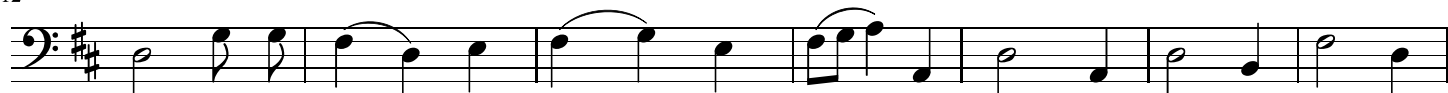
6



mf

shep - herds in fields as they lay, In fields where they lay keep - ing their
East be - yond them far, and to the earth it gave great
hem it took ist rest, and there it did both stop and
ly up - pon their knee, and of - fer'd there in his pres -

12



mf

sheep, on a cold win - ter's night that was so deep Now - ell, Now - ell, Now -
light and so it con - ti - ued both day and night.
stay right o - ver the place where Je - sus lay.
ence, their gold and myrrh and frank - in - cense.

19



f

mf

ell Now - ell Born is the King of Is - ra - el.