

The first Nowell

Tenor



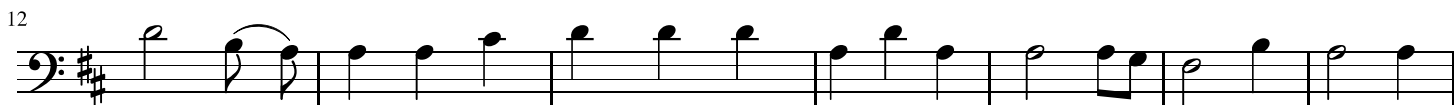
mf

The_ first Now - ell the an - gel did_ say Was to cer - tain poor
They. look - ed up and saw_ a_ star, Shin - ning in_ the
This_ star drew night to the_ north - west, O'er_ Beth - le -
Then. en - er'd in those wise - men_ three, fell_ rev - 'rent -



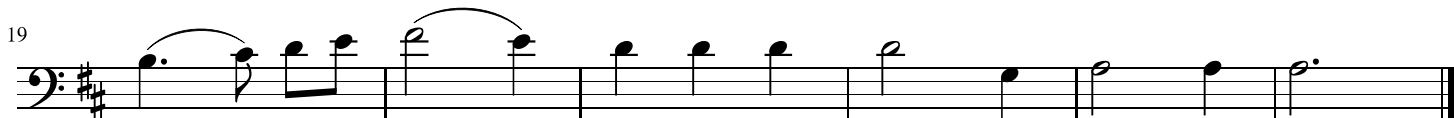
mf

shep - herds in fields as they lay, In_ fields where they_ lay keep - ing their.
East, be - yond_ them far, and_ to the earth_ it gave_ great.
hem_ it took_ ist rest, and_ there it did_ both stop_ and_
ly_ up - pon_ their knee, and_ of - fer'd there_ in his_ pres -



mf

sheep, on a cold win - ter's night_ that was_ so deep Now - ell Now - ell Now -
light, and_ so it con - ti - ued both day_ and night.
stay right_ o - ver the place_ where je - sus lay.
ence, their_ gold_ and myrrh_ and frank - in - cense.



f

ell_ Now - ell_ Born is the King of Is - ra - el. *mf*